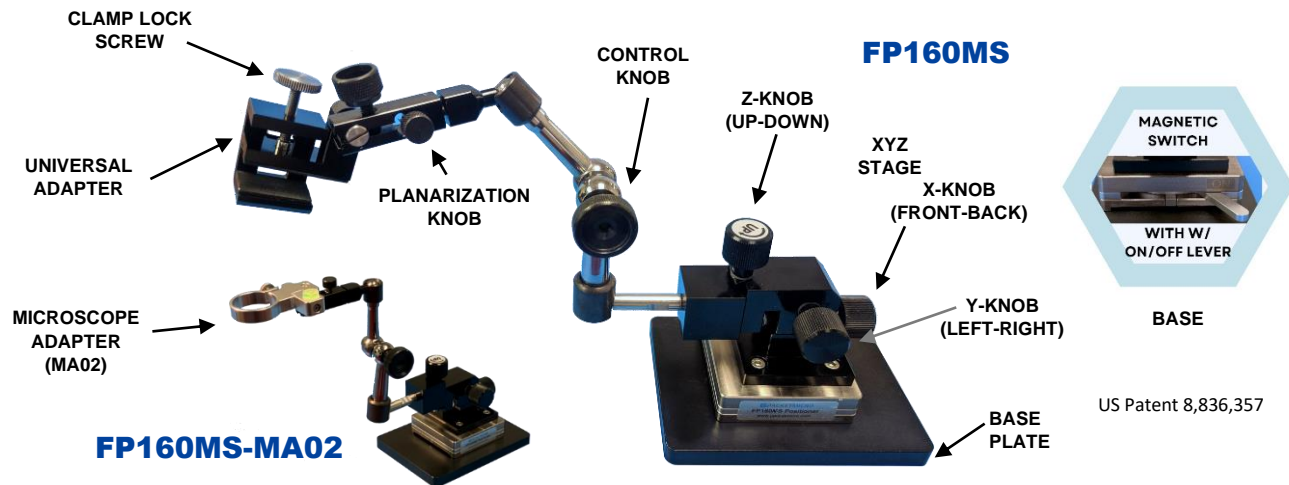


FLEX POSITIONER FP160MS

THE FLEXIBLE, HIGH-PRECISION MANIPULATOR FOR PROBES AND MICROSCOPES



The FP160MS retains all the features of the Innovative FP160 with an added **magnetic switch** at the base for vertical and horizontal probing applications.

- Articulated arm controlled by a single thumb knob
- Independent XYZ stage for fine adjustments of probe position and contact force
- Magnetic switch enables a user to quickly mount & dismount the positioner
- Light weight
- Work with all PacketMicro Probing fixtures

Video: https://packetmicro.com/Videos/PacketMicro_FP160_Positioner.mp4

SPECIFICATIONS	
Articulated arm	4 links and 3 joints controlled by a single thumb knob
Arm Length	210 mm (8.3")
XYZ-axis Travel	12 mm with 500 μ m/turn (50 TPI)
Planarization \pm θ control	$\pm 7.5^\circ$
Dimensions / Weight	320 Lmax x 68 W x 250 mm Hmax, (12.5 x 2.7 x 9.8") / 0.9 kg (2 lb.)
Base Plate	120 L x 90 W x 10.5 mm H (4.7"x 3.6" x 0.45") / 0.82 kg (1.8 lb.)

ADAPTERS



Universal Adapter (UA16-FP160)

UA16 adapter is for holding large oscilloscope and RF probes

- Size: 25 L x 25 W x 35 mm H (1 x 1 x 1.4")
- Opening: adjustable 4 – 16 mm (0.16 – 0.63")

Microscope Adapter (MA02)

MA02 adapter with adjustable level indicator is for holding digital microscopes

- Size: 68 L x 55 W x 25 mm H (2.7 x 2.2 x 1")
- Diameter adjustable: 31.5 – 32.5 mm (1.24 – 1.28")

APPLICATIONS

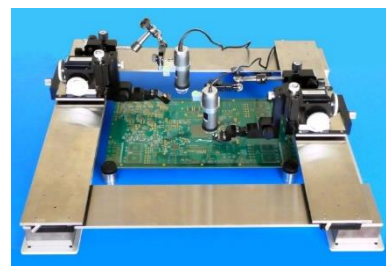
FP160MS-MA02 is ideal for vertical probing applications because its light weight allows it to be mounted on the same slider with the probe positioner. In this case, a user only needs to adjust the microscope to focus on the test probe once and do not need to make lateral adjustment when the test probe is moved to a different location. This approach can reduce 40% of the time for each probe landing. The same approach can be used for horizontal probing applications.



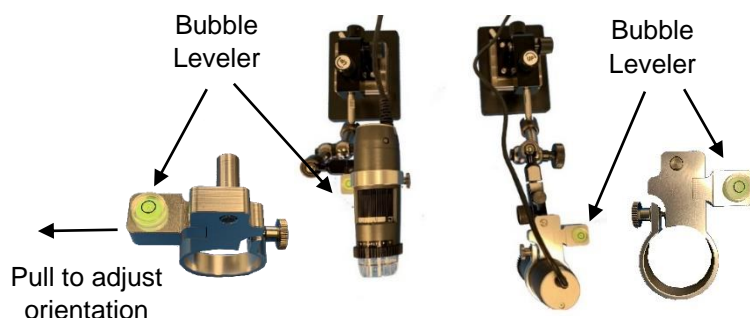
FP160MS-MA02 used in VPS10 Probe Station



MA02 holds the microscope perpendicularly to PCB



FP160MS-MA02 used in HPS24 Probe Station



MA02 microscope holder is specifically designed for probing applications with Dino-Lite microscopes. Its built-in 360° adjustable bubble leveler enables the microscope to be correctly oriented at a 90° angle to the PCB. This is essential for landing a test probe on the PCB by eliminating the false perception of lateral probe movement. In this case, a user does not need to constantly adjust lateral position of the test probe while lowering it to touch down on the test pads.

PART NUMBERS	DESCRIPTION
FP160MS	Articulated-arm positioner with XYZ stage, magnetic switch, and universal adapter
FP160MS-MA02	Articulated-arm positioner with XYZ stage, magnetic switch, and MA02 adapter
MA02	Microscope adapter with adjustable level indicator
FP160	Articulated-arm positioner with XYZ stage, and universal adapter

ACCESSORIES	DIGITAL MICROSCOPE
AF4515ZTL	Dino-Lite Edge 1.3MP 10x-140x, LWD, polarizer, AMR
AF7515MZTL	Dino-Lite Edge 5MP 10x-140x, LWD, metal housing, polarizer, AMR
AF7915MZTL	Dino-Lite Edge 5MP 10x-140x, LWD, metal housing, polarizer, AMR, EDOF, DPQ

ABOUT PACKETMICRO

PacketMicro, headquartered in Silicon Valley, provides one-stop shopping for your needs in PCB probing and signal-integrity analysis. Its product offering includes a wide range of rugged RF probes up to 40 GHz, patented probe positioners, DIY bench-top probe stations, flexible phase-stable RF cables, digital microscopes, and AITT signal-integrity analysis tools for interconnect de-embedding and PCB material extraction. PacketMicro customers include many Fortune 100 companies in 35+ countries. For more information, please visit www.packetmicro.com.